

SoftBank 101SI

Upgrade tool for Windows PC

Instruction Manual

Introduction

Thank you for purchasing SoftBank 101SI and using upgrade tool.
This upgrade tool is for 101SI firmware.

Operating Environment

WLAN Environment

101SI supports IEEE 802.11n/g/n standards. Connect PC and 101SI for upgrading.

Compatible Operating System

Use upgrade tool in any of these operating environments.

- Windows® XP Home Edition Service Pack2 or later
Professional Service Pack2 or later
- Windows® XP (64-bit)
- Windows® Vista Home Basic (32-bit or 64-bit)
Home Premium (32-bit or 64-bit)
Business (32-bit or 64-bit)
Ultimate (32-bit or 64-bit)
Starter (32-bit)
- Windows® 7 Home Premium (32-bit or 64-bit)
Professional (32-bit or 64-bit)
Ultimate (32-bit or 64-bit)
Enterprise (32-bit or 64-bit)

To upgrade, .Net Framework 2.0 or higher is required.

If .Net Framework 2.0 or higher is not installed in PC, .Net Framework 2.0 or higher has to be installed for normal execution.

Memory Requirement

- Windows® XP 128MB (over 512MB recommended)
- Windows® Vista 128MB (over 512MB recommended)
- Windows® 7 128MB (over 512MB recommended)

Available Hard Disk Capacity

Over 20MB recommended

Recommended resolution

Over 1024 x 768 recommended


Notes

- Unauthorized copying of any part of this guide is prohibited.
- Contents are subject to change without prior notice.

Software Precautions

- You are only given the right to use the software. Such rights do not include copyrights, or the right to give or sell this software to any third party.
- You are permitted to make copies of the software for backup purposes only. You are not permitted to make copies for distributing or selling to any third party.
- SOFTBANK MOBILE Corp. and its resellers take no responsibility for losses incurred by the user or any third party due to the use of the software.

Usage Conditions

- If Battery Strength is level 1 (), the upgrade is unavailable.
Upgrade after charging Battery.
- Don't power off 101SI and PC.
And, don't disconnect the Wi-Fi connection.
- Before starting the upgrade, please make sure that 101SI and your PC are in the environment which enables them to connect to each other by WLAN connection.
- The upgrade tool cannot use USB Mode (101SI to PC via USB cable).
- Do not upgrade in the status of Note-PC battery operated.
Please use the designated AC adapter of the Note-PC.
- Upgrading takes several minutes. Then, PC doesn't become sleep-mode.
- When PC which becomes use is Windows XP, Microsoft .Net Framework 2.0 or higher must be installed in PC.
If Microsoft .Net Framework isn't installed to PC, upgrade tool will display the message to install Microsoft .Net Framework.
After installing Microsoft .Net Framework from Microsoft homepage, it is possible to use upgrade tool.
- Update tool doesn't depend on the administrator authority of the OS.

Trademarks

All logos are trademarks or registered trademarks of Seiko Instruments Inc. in Japan or other countries.

Copyright© Seiko Instruments Inc. 2012, All rights reserved.

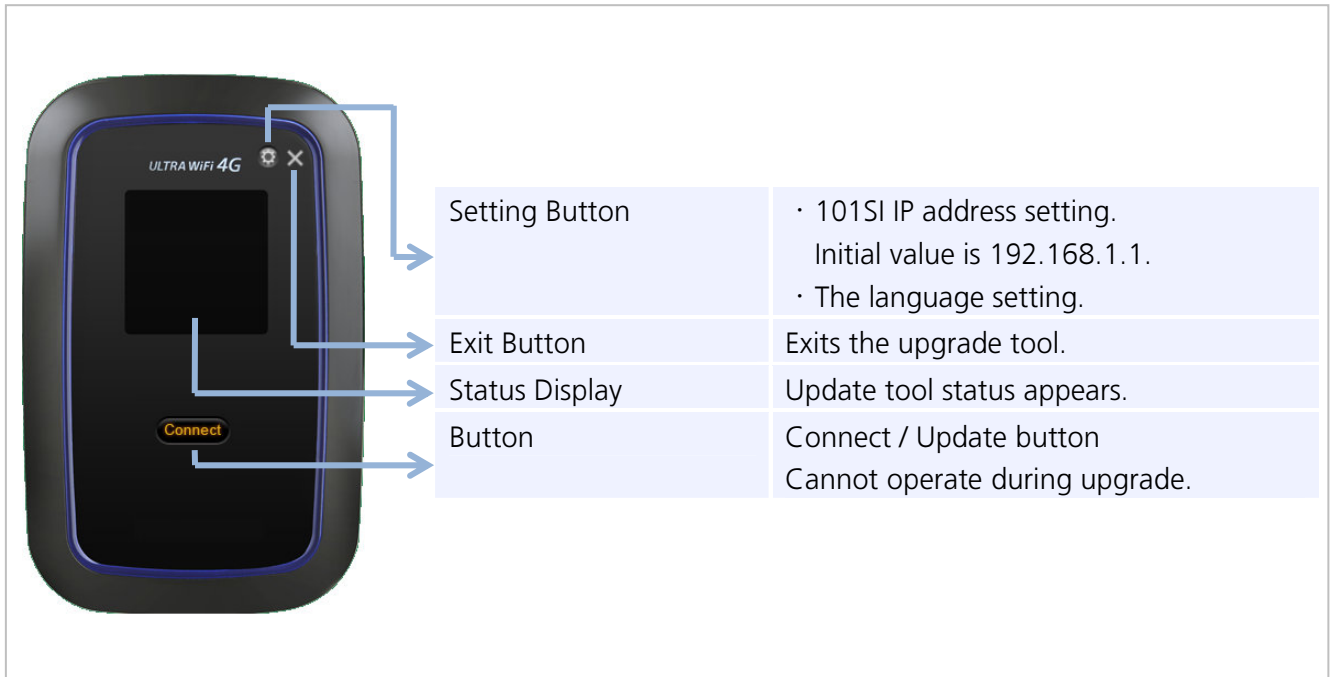
SoftBank, SoftBank's equivalent in Japanese and SoftBank logo are registered trademarks or trademarks of SOFTBANK CORP. in Japan and other countries.

Microsoft®, Windows®, Internet Explorer, Windows Vista®, .Net® are registered trademarks of Microsoft Corporation in the United States/other countries.

Microsoft Windows Operating System is indicated in its abbreviated form as Windows.


The names of companies, products and services used in this document are registered trademarks or trademarks of the respective companies.

Upgrade tool Specification



AP Firmware and more than one firmware such as Modem Firmware are in 101SI.
Upgrade tool can upgrade AP Firmware and Modem Firmware.

Language Setting

The display language of the upgrade tool can be set.
Click the Setting Button (), and select the Language tab.
After that, select the language and click "OK".



Language	Description
English	English setting
Japanese	Japanese setting

Status Notifications

Display	Status
Wi-Fi 接続し、“Connect”ボタンをクリックしてください。	It is a wait of the WLAN connection between the PC and 101SI. When WLAN is connected, click Connect button.
Press “Connect” button to Connect with 101SI.	
101SI と接続中...	Upgrade tool and 101SI are connecting.
Connecting with 101SI.	
接続完了... AP : ○○○ モデム : ○○○ “Update”ボタンをクリックしてください。 ソフトウェアを更新します。	The connection between upgrade tool and 101SI completed. Click the “Upgrade” button, and the upgrade process will start.
Connected... AP : ○○○ MDM : ○○○ Press “Update” button to FW upgrade.	
ソフトウェア更新中 数分お待ちください。	101SI upgrade is in progress.
Updating... Wait for a few minutes...	
ソフトウェア更新完了 101SI を再起動します。 そのままお待ちください。	101SI upgrade is completed.
FW Update completed... 101SI will be rebooted automatically.	
この 101SI は、すでにアップグレードされています。	The 101SI FW has already been upgraded. Exit the upgrade tool.
The 101SI FW is same or higher version than current version.	
デバイスと 101SI の Wi-Fi 接続をご確認ください。	The upgrade failed because of the lack of connection between upgrade tool and 101SI.
Please Check the WiFi Connection between your device and 101SI.	
バッテリー残量不足 充電後、再度実施してください。	The upgrade process didn't succeed because 101SI's battery is low.
Battery Level Low... Retry after charging...	
ソフトウェア更新に失敗しました。 再度実施してください。	Upgrade didn't succeed.
Update failed. Try again...	

Upgrade Method

The upgrade procedure of 101SI is described below.

This document explains Windows7 to an example.

As for the operating method, Windows XP, Windows Vista, too, become a similar procedure.

Upgrade Flow

Upgrade tool download from SII homepage.

<http://www.sii.co.jp/101si/download/index.html>

Please confirm “101SI ソフトウェア使用許諾契約” and download the update tool.



Connecting WLAN.

- Connecting 101SI and PC by WLAN.
(About operation method, refer “101SI Quick Start” or “SoftBank 101SI User Guide”.)
- Start Upgrade tool after download from SII homepage.
- Connecting to 101SI by Upgrade tool.
- ※For more detailed information about the operation,
please refer to “Connecting to PC by WLAN (Page.9)”.




Upgrade 101SI Firmware

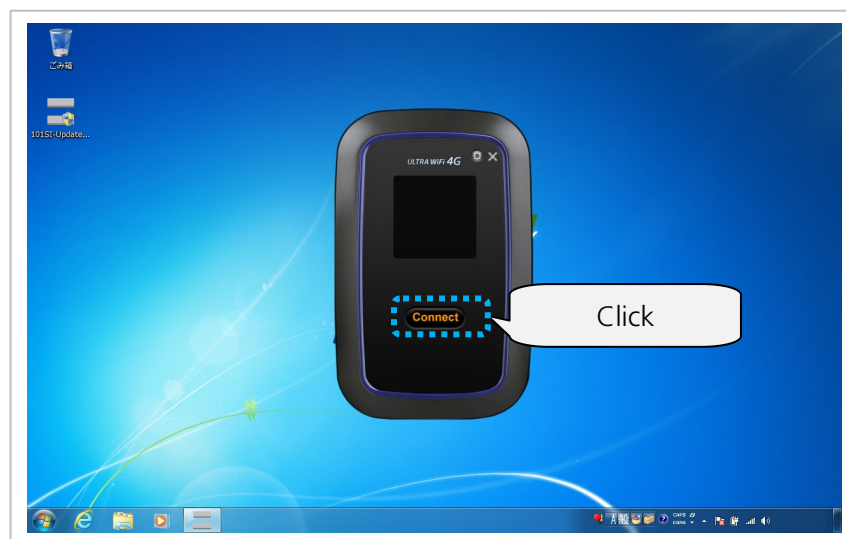
- Click “Connect” button” on Upgrade tool. Upgrade will start.
- When upgrade was completed,
the status display on upgrade tool becomes “FW Update completed”.
- After upgrade was completed, close Upgrade tool.
- ※After upgrade was completed, you may uninstall the upgrade tool from the PC.
- ※For more detailed information about the operation,
please refer to “101SI Upgrade (Page.10)”.


Connecting to PC by WLAN

- ① Connecting to PC by WLAN.
About WLAN connecting method, please refer "101SI Quick Start" or "SoftBank 101SI User Guide".
- ② Start Upgrade tool after download from SII home page.
※Upgrade tool is compressed in ZIP form.
Please thaw the upgrade tool downloaded in arbitrary folders, such as a desktop.



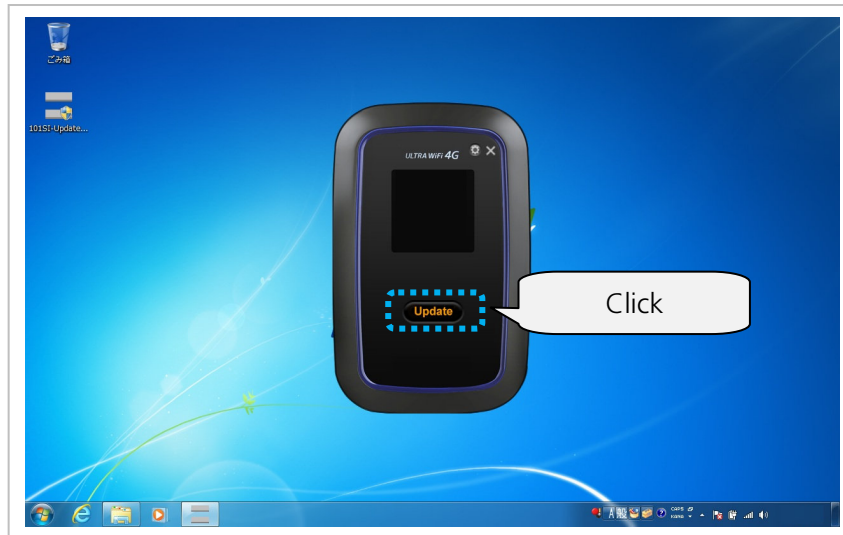
- ③ Connecting to 101SI by Upgrade tool.
Click Connect button () on Upgrade tool.
After that, status display shows "Connecting with 101SI".



- ※When connected with 101SI, Status Display shows current 101SI firmware version.
- ※If 101SI firmware is already upgraded, cannot upgrade.
In this case, close upgrade tool by clicked Exit button ().
- ※If "Please Check the Wifi Connection between your device and 101SI." was showed in Status Display, WLAN connection may fail. Please check whether the PC and 101SI are connected by WLAN.
If WLAN connection is completed, the IP address of 101SI may be different. Click Setting button, and enter the old IP address.

101SI Upgrade


- ① After 101SI completed to connect with WLAN on the upgrade tool, Click the upgrade button() and upgrade process will start.



“Updating...” is showed in Status Display during upgrade.

※Updating takes several minutes.

※Don't Power Off 101SI or PC, or don't remove a battery pack, it might affect the upgrade.

- ② After upgrade was finished, “FW Update completed...” is showed in Status Display.
Then close the Upgrade tool.()
After that, 101SI is rebooted automatically. Don't power off until rebooting is completed.

※101SI firmware version can be checked from Web UI after firmware upgrade.
Enter URL <http://192.168.1.1> (default) to PC browser, and login to Web UI.
The default ID is “user” and Password is “0000”.

Troubleshooting

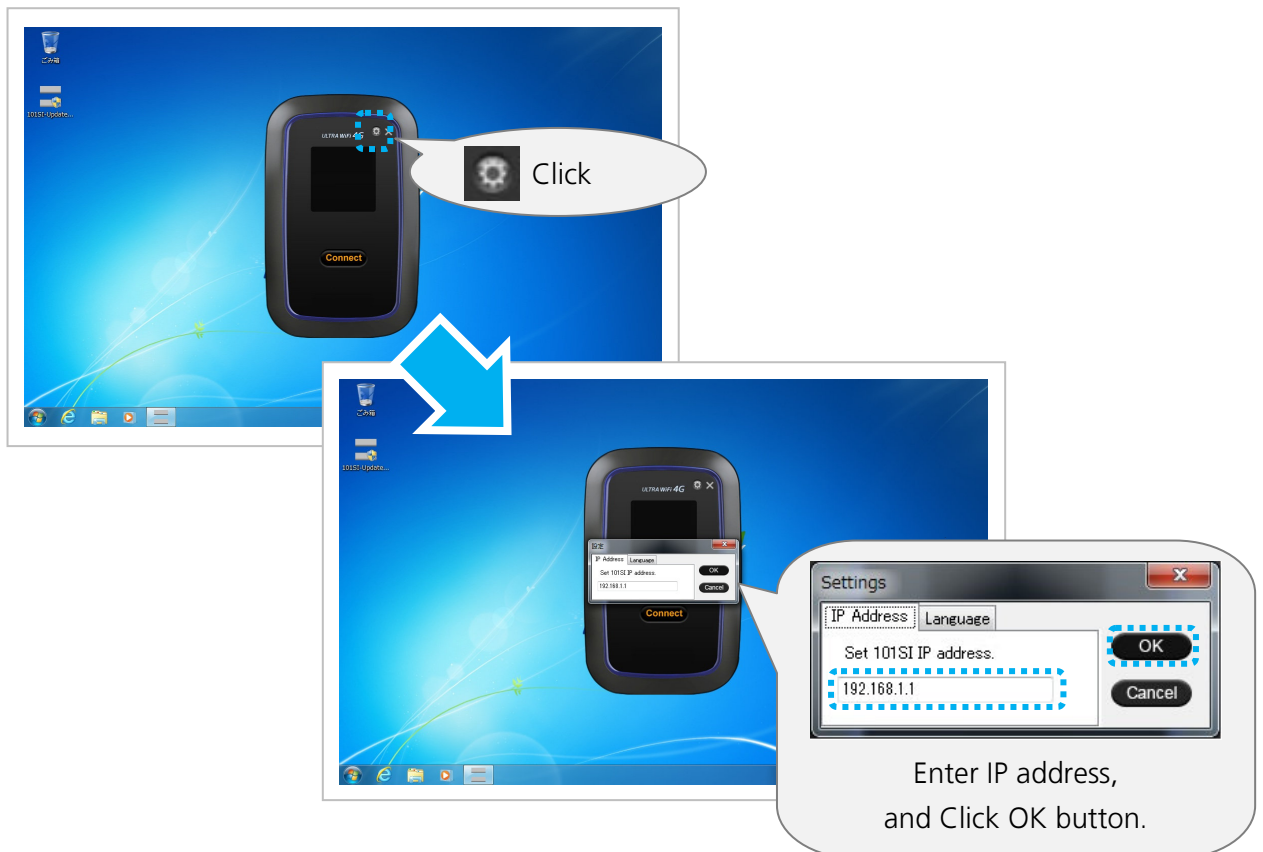
Troubleshooting List

No.	Symptoms	Reference
1	Unable to connect to 101SI by WLAN connection.	P.11
2	Unable to upgrade.	P.12

How to Respond

Unable to connect to 101SI by WLAN connection.

- ① Make sure 101SI is properly connected to PC.
- ② Was IP address of 101SI already changed? (default : 192.168.1.1)
If IP address of 101SI was changed, click the Setting button of Upgrade tool.



Unable to upgrade.

- Already is the latest software, the display will show "The 101SI FW is same or higher version than current version."
In this case, the upgrade is unnecessary.
- If Battery level is level 1, the following upgrades are unavailable.
Upgrade after charging Battery.
- If "Update failed. Try again..." was showed, upgrade once again.
Then, when upgrade fails again, restart 101SI and PC. Connect 101SI via WLAN, and upgrade once again.

SoftBank 101SI

Upgrade tool for Windows PC
Instruction Manual

October 2012, First Edition

Model Name: SoftBank 101SI
Manufacture: Seiko Instruments Inc.